

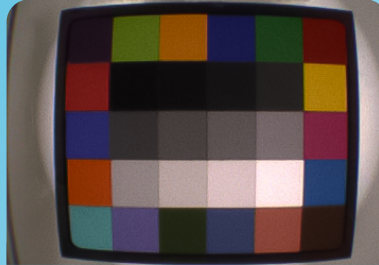
Miniature CMOS Image Sensor Module



Features



Fujikura's miniature CMOS image sensor modules combine miniature color CMOS image sensor with wafer level optics and micro coaxial cables.



160kpixel CMOS image sensor module offers high resolution image quality with small form factor (1.05 mm sq.) and wafer lens optics.



Ideal solution for applications where minimal size and high-quality imaging is at a premium, such as medical endoscopes.

Applications

- Disposable Endoscope,
- Catheter-based applications
- Visualization for medical devices

Product Lineup

- 160kpixel CMOS image sensor module (160k module)
- 40kpixel CMOS image sensor module (40k module)

Characteristics

MAIN CHARACTERISTICS

ITEMS	160k Module	40k Module
Distal end rigid portion length	Less than 5.0mm	Less than 3.0mm
Distal end size (nominal)	W:1.05mm, H:1.05mm	W:0.65mm, H:0.65mm
Harness dimensions	W:0.85mm, H:0.54mm	W:0.63mm, H:0.37mm
Pixel numbers	400 x 400 (160,000pixels)	200 x 200 (40,000pixels)
Frame rate	30fps	30fps

OPTICAL CHARACTERISTICS

ITEMS	160k Module	40k Module
Field of view (diagonal in air, nominal)	120°	120°
Depth of field	5mm ~ 50mm	3mm ~ 30mm

Fujikura Ltd.

1-5-1, Kiba, Koto-ku, Tokyo 135-8512, Japan

Tel : +81-3-5606-1208

Web site : <https://www.fujikura.com/solutions/medical/>

LinkedIn : <https://www.linkedin.com/company/fujikura-medical/>